



REDEMPTION HILL COMMUNITY

FUNDRAISING CAMPAIGN

THE GOAL OF THIS DOCUMENT

Redemption Hill is calling for *partners* to join us *financially* and *prayerfully* to help us *move into a new church building* and continue to live out our mission for the Kingdom of God in Lewiston/Auburn, ME.

The Lord is doing amazing work in our church and in our city.

We are excited to invite you to partner with us and help us move into a new space.

Allow us to tell the story of why we believe this is where God is calling us and how you can help.

HOW DO WE LIVE?

1. Like a family

We live life together. We believe the gospel of Jesus Christ forms a people of God that are to live like a spiritual family. We are not content to live like a “club” or view the Sunday morning service as what “church” is. We know each other deeply and live together, as a gospel-formed family.

2. Like servants

Jesus is our role model. He came not to be served but to serve and give His life as a ransom for many. We seek to follow His heart and posture by having the same mind as Christ, serving one another and our community with sacrificial, joyful, practical, and humble service.

3. Like missionaries

The church is a people formed from and for the mission of God. God is a missionary and He has welcomed us into His mission to saturate the world with His glory. That means we live in light of God’s calling for us to be ambassadors of Christ in every area of life. And we do so together.

4. In kingdom-minded unity

Our life together is unashamedly devoted to unity through commitment. Commitment to the gospel of Jesus. Commitment to the scriptures. Commitment to each other. Commitment to the mission of God. Commitment to God’s kingdom over our own. And that unity is deep.

5. In mission-minded small groups

To disciple one another and live on mission means living life together. Our small groups are called Missional Communities and they are groups of families that pursue God together (Upward), pursue one another relationally (Inward), and pursue the lost world intentionally (Outward).

6. In scripture-saturated DNAs

The goal of our fellowship is to help each other follow Jesus. To do so, we see the value in following scriptural examples of discipling relationships. A DNA is a group of 2-4 men (or women) that gather regularly to Discover God through His Word, Nurture love for Christ, and Act in response to the gospel.



WHY LEWISTON, ME?



The 2nd most post-Christian city in America ...

According to Barna's recent study, our area of Maine is the 2nd most post-Christian in the country. That means most people have little interest in religion, have never heard the gospel of Jesus, and have never experienced a healthy church environment.

Multicultural and quickly growing ...

Lewiston is an old mill town, populated by many 3rd and 4th-generation Irish and French immigrants. However, Bates college has brought young students from all over the world. Lewiston/Auburn has also become a haven for refugees and immigrants. There is a growing number of immigrants from Africa, many of which are Muslim. Some parts feel like a city and other parts feel like a small Maine town.

With great spiritual needs ...

Lewiston/Auburn is home to many below the poverty line, including hundreds of homeless teens. Poverty, addiction, mental illness, and spiritual skepticism are common in our city. Many are seeking to satisfy their souls with idols, distractions, and vain ambitions. Few know the life that Jesus offers.

And little to no gospel witness.

We are well connected with other healthy churches; however, few are able to be intentionally present to picture and proclaim Jesus to those that live in the downtown area of our small city: the poor, the addicted, the immigrant, the orphan, the searching. To reach our post-Christian city requires Christians willing to live "uncomfortably" for the sake of reaching those who don't know Jesus.



HELP US MOVE TO A BETTER LOCATION

The Lord has providentially led us out of our current location and has opened the door to meet in an even better gathering space, which will increase our capacity to live on mission in Lewiston/Auburn together. **But we can only do so with your help.**

TO GIVE, GO TO: [RHCENTRAL.COM/FUNDRAISING](https://rhcentral.com/fundraising)

WHY WE'RE MOVING FROM THE "OLD MILL"

The "old shoe mill" at 550 Lisbon St.

We have been renting an old mill space in the downtown area for 7 years now. It has positioned us to be within walking distance for most in the poorer community. We have been an active presence in the downtown area.

Ongoing practical challenges/growing pains

Although we love the old mill, there are a number of reasons it's been difficult:

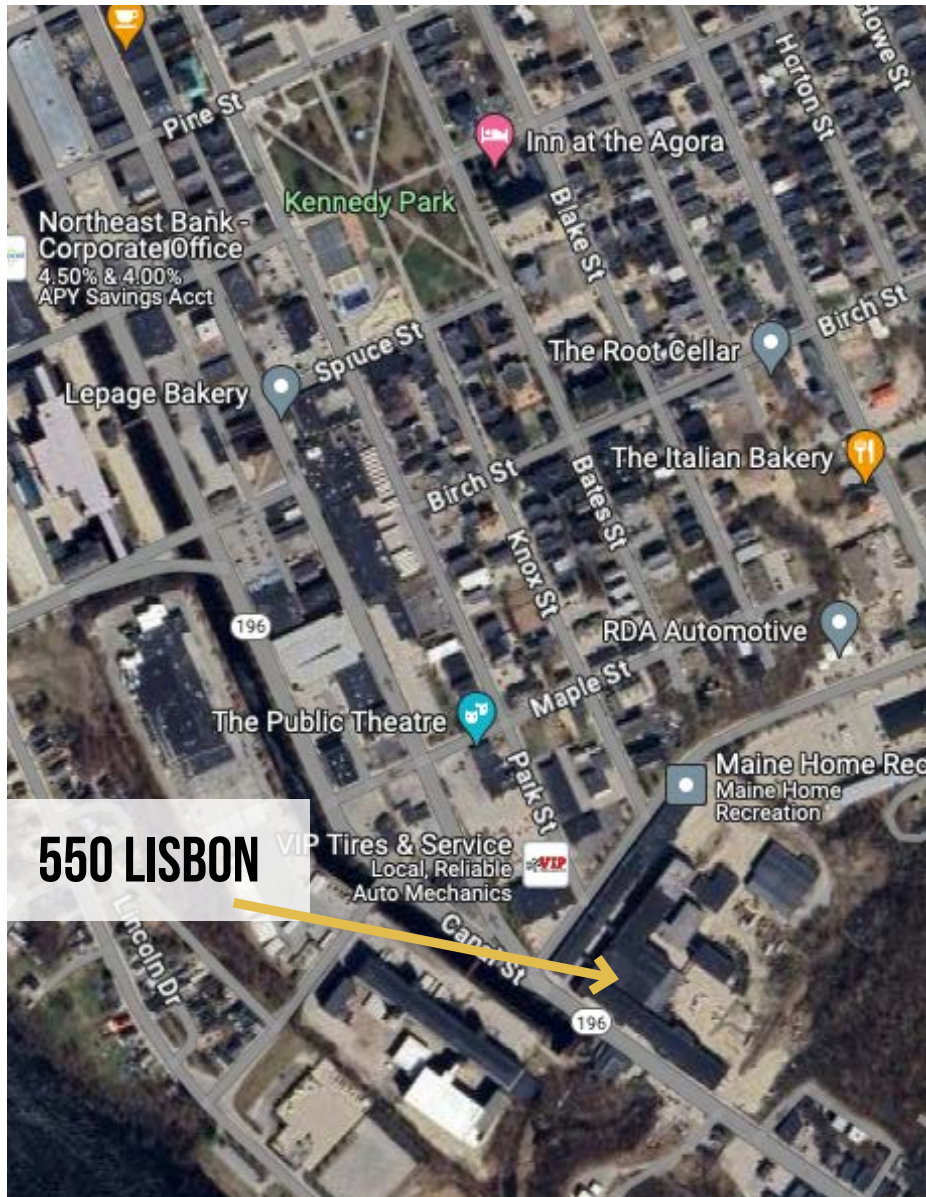
- Mice problems (old mills have regular infestations)
- Trouble with heating/cooling (half the space has no heat)
- Parking challenges (the alley is in rough shape and some have to walk far)
- Lack of visibility (people often get lost trying to "find us")
- Too small for us now (we are maxing out our nursery and worship room on Sundays)

New problems with city codes

The city has required a number of new updates be made to the old mills that we cannot afford. That means we would need to install new sprinklers, fire-alarm stations, exit signs, drywall, etc. We also know that if we made all the necessary renovations, these would not go toward a space we currently own.

We don't want to rent, if possible

The elders at Redemption Hill believe this is God's providence in leading us to find a new space. Because we rent, all building costs are not going towards long-term investment. To be a gospel presence for the next 200 years means finding a more permanent space.



OUR NEW LOCATION: 64 LISBON ST

Lower entrance



Upper entrance

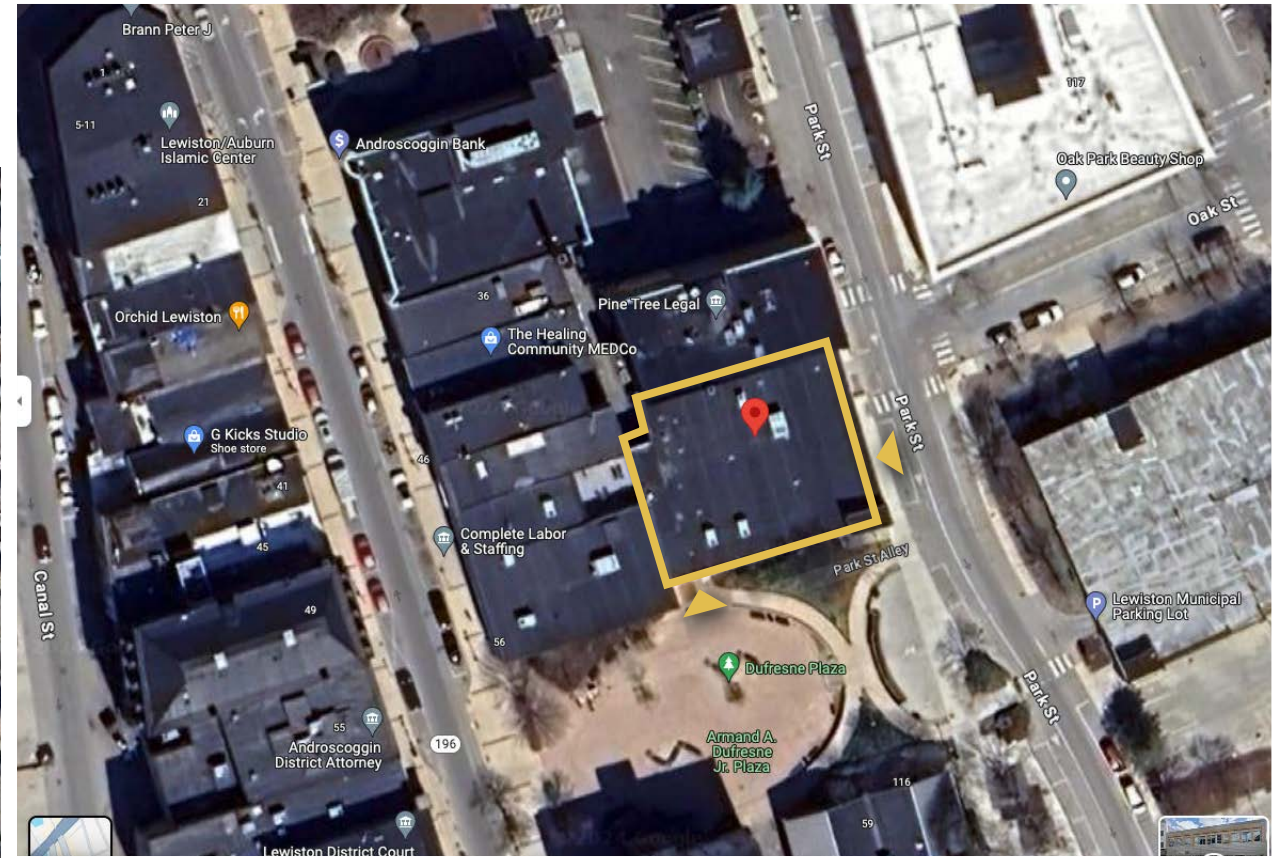
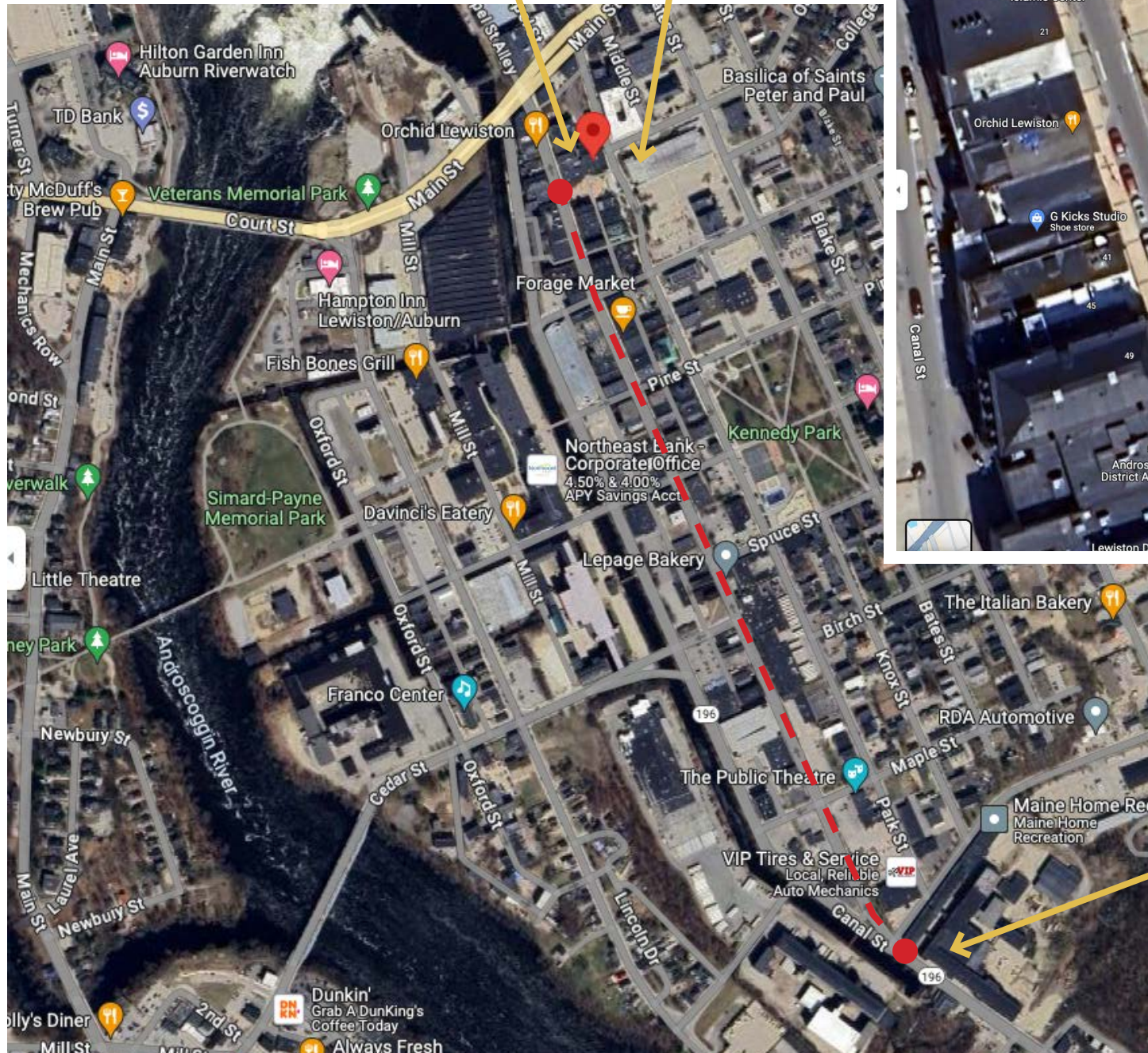


TO GIVE, GO TO: [RHCENTRAL.COM/FUNDRAISING](https://rhcentral.com/fundraising)

LOCATION

64 LISBON

PARKING GARAGE



• 64 Lisbon | 10,000 sq. ft

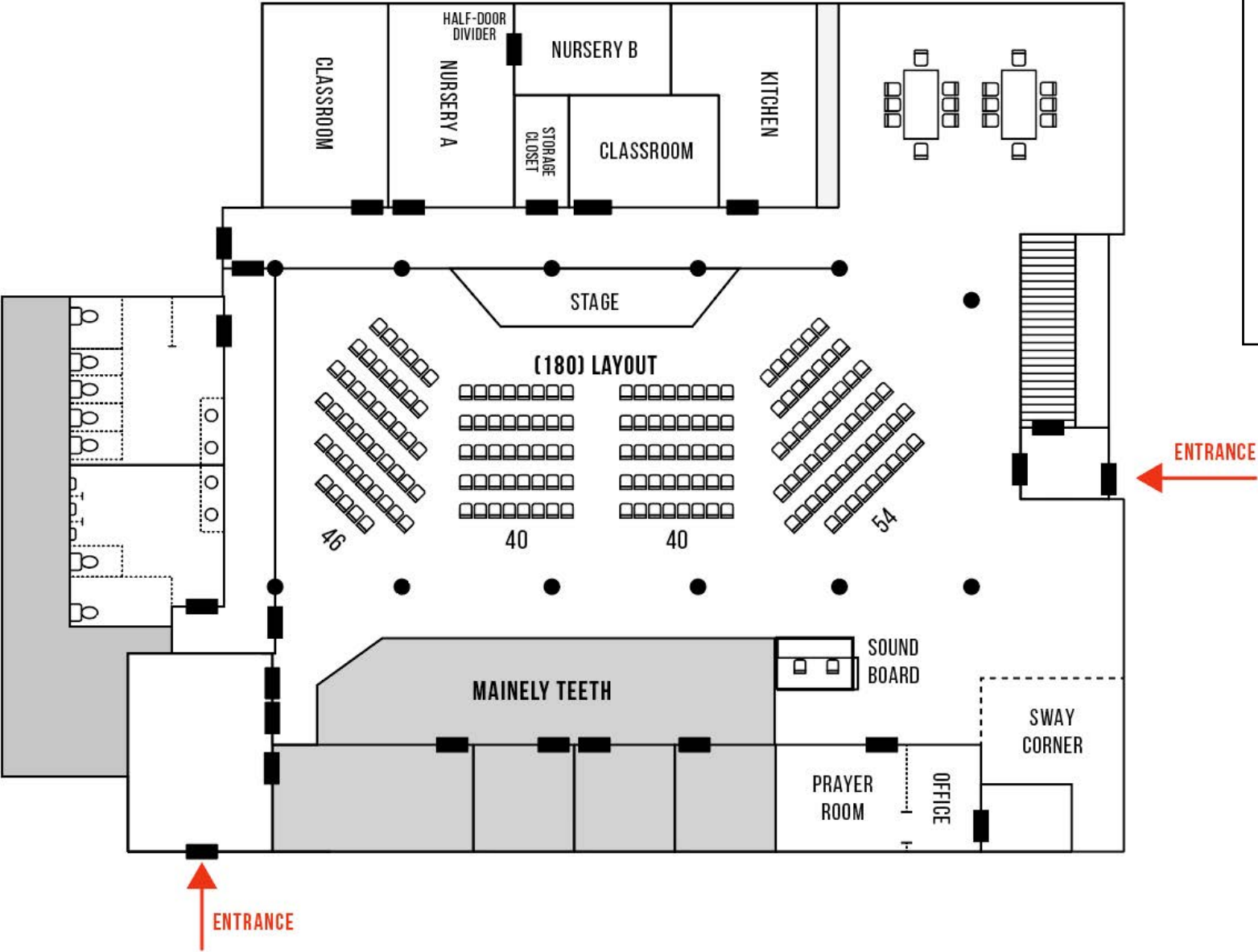
vs.

• 550 Lisbon | 4,800 sq. ft

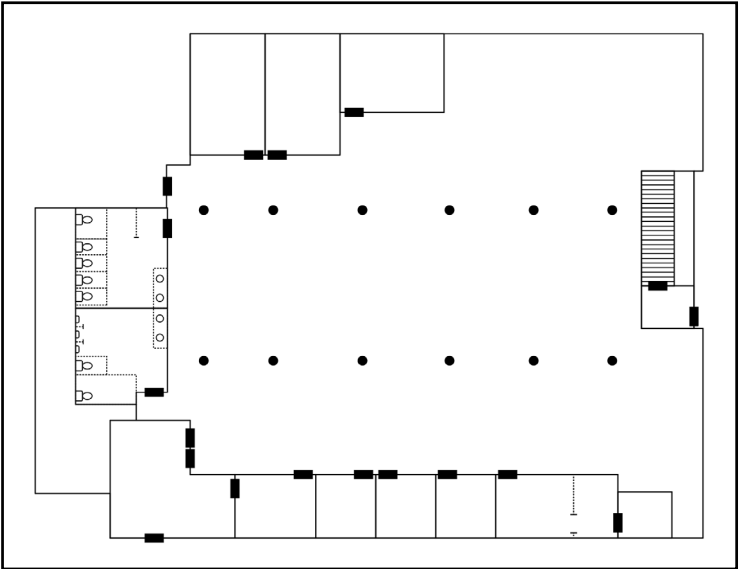
550 LISBON

- Parking Garage is free on weekends
- Closer to Downtown/Kennedy Park
- Highly visible in community
- Twice the size of our current space

INITIAL RENOVATION PLANS



CURRENT BLUEPRINT



Notes

- Build new classroom and larger kitchen area on North Side
- Build Walls to separate main room from classrooms/bathrooms
- Open use for additional offices
- Could sublease/rent easily
- There is a basement underneath as well, that can be renovated

BENEFITS OF THIS LOCATION

- ✓ High-traffic area in the heart of downtown Lewiston
- ✓ Wonderful parking solution (public garage)
- ✓ More than enough space to grow to 3x our current size
- ✓ Handicap accessibility
- ✓ Public park outside that can be used for events/ministry
- ✓ Ability to purchase the building in the future
- ✓ Newer building with plenty of bathrooms/offices/classrooms
- ✓ Close to Kennedy Park/immigrant community
- ✓ Ability to sublease or rent space, if desired
- ✓ Large basement for storage and potential future renovation
- ✓ Complete freedom to build/renovate as desired

FINANCIAL NEEDS

COST FOR CURRENT LOCATION

\$32k/year

\$2,670/mo

Our current expenses are incredibly low for the quality of our space, as we are paying for “mill space.”

Any new space we are looking for will most likely be 2-3 times more than we currently pay

ESTIMATED COST OF NEW LOCATION

\$84k/year

\$7,000/mo

Roughly 2.5x our current building expenses, which is much lower than you would expect for the space.

GOD IS OPENING DOORS

Christian owners are being very generous

The building is under new ownership by Christians with a heart to bless our church. They have agreed to charge us well below what the space is worth and are willing to work with us to make the space ideal for our ministry needs.

The space is worth far more than what they have agreed to charge us.

Rent at first, then purchase within 5 years

The owners have agreed that we may purchase our space and own it outright. We also have the ability to sublease our space to mitigate some of our costs and potentially bless other Christians nonprofits or a new church plant. **This could be our permanent home.**

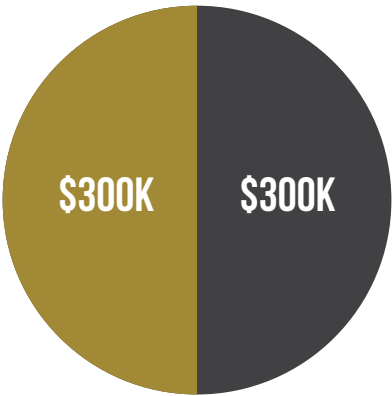
FUNDRAISING CAMPAIGN

3 PHASES OF FUNDRAISING TOWARDS \$600K

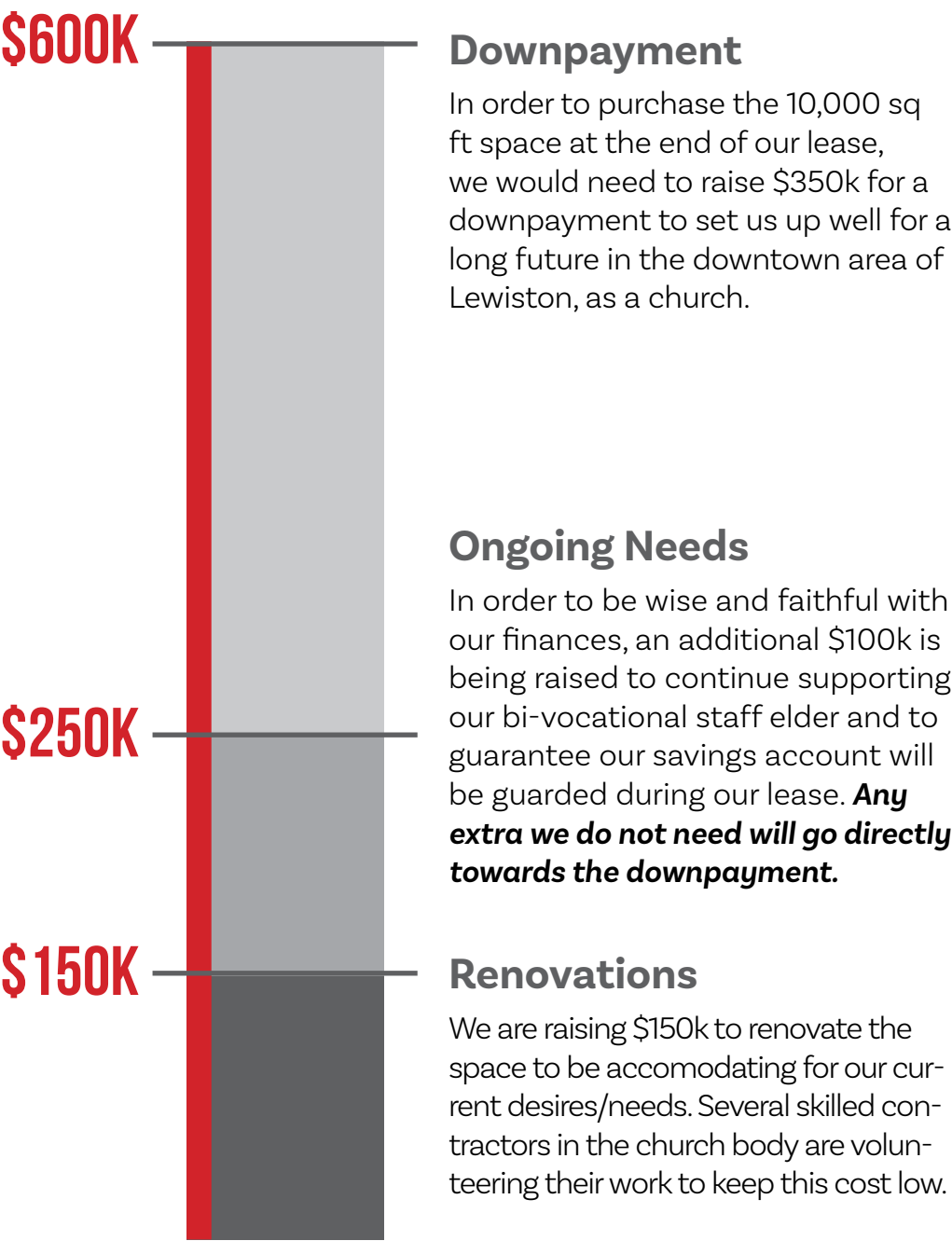
We need immediate financial help to renovate the space to make it ready for church-use. Then, we will need some supplementary income to help with ongoing costs during our rental lease. Finally, we want to raise funds to put a down payment on the space and purchase it, as church.

WE ARE COMMITTED TO A 50/50 FUNDRAISING PLAN

We are a small church; however, our members are dedicated to give above and beyond their normal giving to raise \$300k internally. However, we also believe that God invites others in God’s Kingdom to give to this mission and support us as a young, smaller church living on mission in a city in need of the gospel.



Internal: \$300k (50%)
External: \$300k (50%)



Downpayment

In order to purchase the 10,000 sq ft space at the end of our lease, we would need to raise \$350k for a downpayment to set us up well for a long future in the downtown area of Lewiston, as a church.

Ongoing Needs

In order to be wise and faithful with our finances, an additional \$100k is being raised to continue supporting our bi-vocational staff elder and to guarantee our savings account will be guarded during our lease. **Any extra we do not need will go directly towards the downpayment.**

Renovations

We are raising \$150k to renovate the space to be accomodating for our current desires/needs. Several skilled contractors in the church body are volunteering their work to keep this cost low.

FUNDRAISING GOAL

FUNDRAISING CAMPAIGN

IMMEDIATE GOAL:

\$100K BY DECEMBER 15TH

Initial renovations need to happen quickly and we are currently working toward turning our new space into a place ready for ministry and services. \$100k gets us there.

How your giving gets us there

\$15 = 1 sqft of the space to be fully renovated (floor to ceiling)

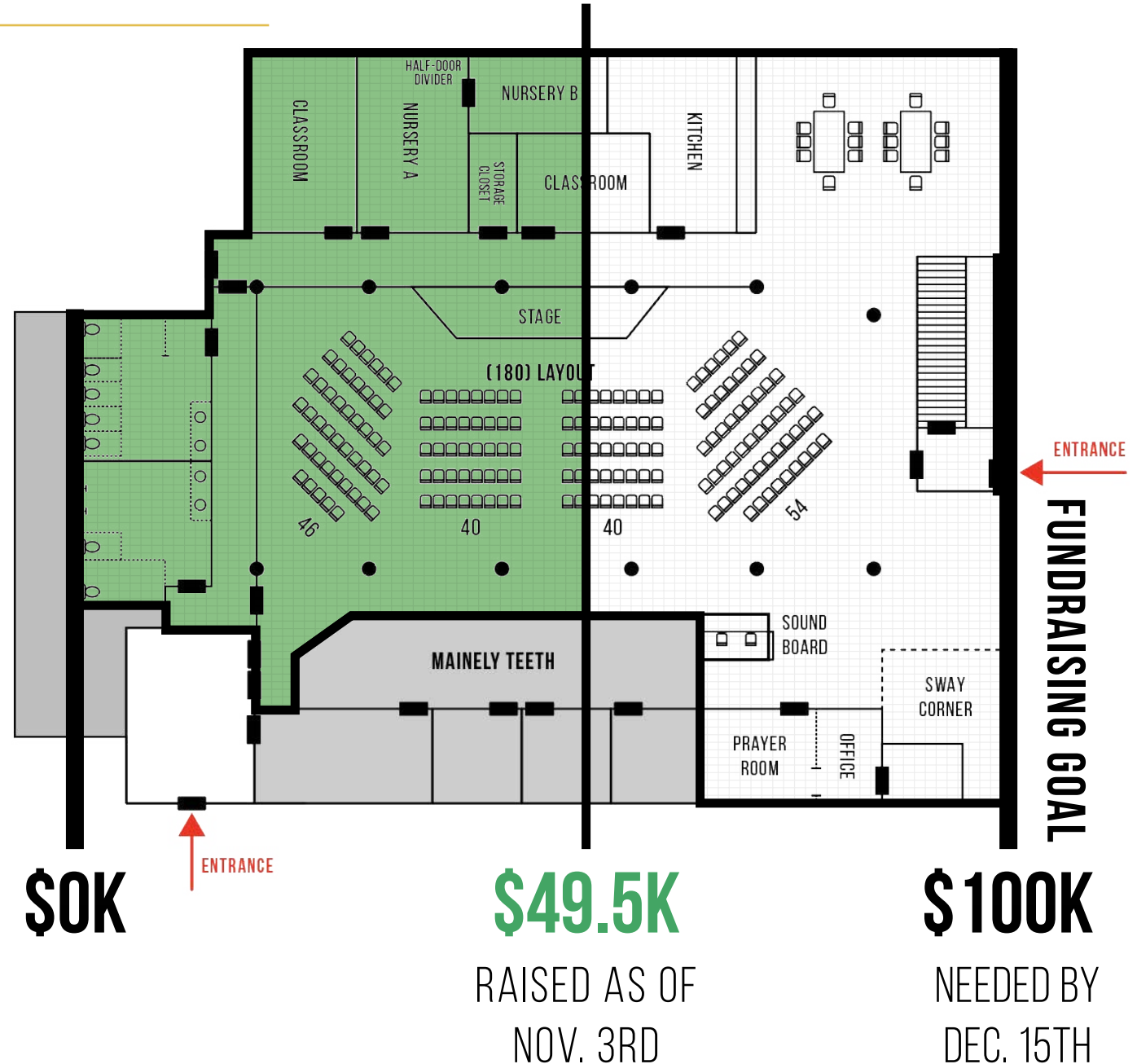
\$60 = 4 sqft (the chair your sitting in)

\$300 = Install 1 of 6 new doors

\$600 = Entire row of seats

\$2,000 = Fully renovate one of the 6 side rooms (classroom/office/prayer room/nursery)

\$5,000 = Fully renovate the new kitchen



TO GIVE, GO TO: [RHCENTRAL.COM/FUNDRAISING](https://rhcentral.com/fundraising)

WHY PARTNER WITH US FINANCIALLY?

1. Because Lewiston/Auburn needs Jesus

This is the 2nd most post-Christian area in the country. The fields are white for harvest and laborers are few. Amid spiritual darkness, Redemption Hill is committed to display and declare the light of Christ where He is not known.

2. Because Maine ministry flourishes with endurance

It takes longer to nurture trust and deep relationships with people who are estranged and skeptical of the church. That means younger churches in Maine often need ongoing generosity for longer than more “churched” areas.

3. So we can continue living as missionaries

Many in our church have sold their homes or changed jobs in order to be more present in our areas of ministry. We are living intentionally and sacrificially for the mission of God in our city. As William Carey expressed, *“I will go down into the pit, if you will hold the ropes.”*

4. We will be set up for greater gospel impact

This new location is even more strategic than our current location. We will have more space to use for a variety of ministry purposes, including ministry to immigrants, the poor, single moms, and college students.

5. We will be set up to be a lasting gospel presence

We believe this could be our permanent home. By moving into a space we can own in the future means this is an investment into the next 200 years and beyond. We want God’s kingdom to be physically present in our city.

6. Because God loves Lewiston/Auburn (and so do we)

We see God working in powerful ways around us. We believe that God’s timing in all of this is very providential. He is leading us to where He wants us, for His glory. Only 5% of the people in the greater Lewiston/Auburn area attend a gospel-preaching church. Many have never even heard the gospel. We believe Jesus is worthy of all their worship, and He has placed us here to make disciples because He loves them.

TO GIVE: [RHCENTRAL.COM/FUNDRAISING](https://rhcentral.com/fundraising)